

Fall 2025

4-H Happenings:

- ❖ Welcome
- ❖ Ribeye Sale
- ❖ National 4-H Week and Fall Project Day
- ❖ Achievement Applications
- ❖ County 4-H Banquet
- ❖ West KY 4-H Teen Retreat
- ❖ Area 4-H Teen Council
- ❖ Hometown Holiday Bazaar
- ❖ John Swack 4-H Scholarship
- ❖ County 4-H Shirts
- ❖ KY Ag Education Week
- ❖ 2026 KY Volunteer Forum
- ❖ 4-H Housekeeping
- ❖ Fundraising Policy
- ❖ Issues Conference
- ❖ 4-H Shirts
- ❖ 4-H Happenings
- ❖ Summer Recap
- ❖ 4-H Graduates

Welcome to a new year with Simpson Co. 4-H! We have 16 clubs this year, led by some amazing volunteer leaders that are excited to welcome you! To attend club meetings, you must have a new enrollment form on file, that you have completed since September 1 of this month! If you haven't, please get this done by September 30. All forms (youth & leader) received by October 1 – your name will go into a drawing for a 4-H hoodie.

Enclosed in the newsletter is the county brochure of clubs. On the front is a QR code – you can scan this code to enroll online – or enrollment forms are in a box by the Extension Office back door. They can be accessed 24/7 and left in the mail slot on the office backdoor at anytime.

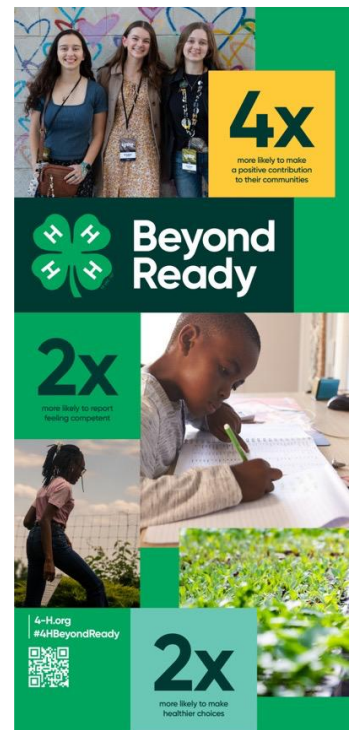
Ribeye Sale October 3

See the enclosed flyer for the 4-H Ribeye sale on Friday, October 3. Please share and encourage friends & family to buy lunch to support Simpson Co. 4-H on this day. **Volunteers are needed from 9:00 a.m. to 2:00 p.m.** We need help grilling, wrapping, selling, and delivering meals. Please let the Extension Office know if you can help out!

National 4-H Week October 5-11

National 4-H Week is October 5-11. Kentucky 4-H has declared Thursday, October 9 as all about “**shining a light on the good**” that 4-H brings to our communities. It's a day to recognize the 4-H members, volunteers, and educators who are making a positive impact locally and beyond. If you would like to recognize a fellow 4-H member or leader please email webster@uky.edu with a 2-3 sentence “shout out” to the person you'd like to recognize.

On Thursday, October 9 there will be a Fall Crafts Project Day at the Extension Office from 3:00-5:30 p.m. for 4-H members. The cost is \$10.00 and participants will make three fall crafts. This is open to 4-H members ages 9-18 as of 1/1/26. Call the Extension Office to register 270-586-4484.



300 N Main St | Franklin, KY 42134 | P: 270-586-4484 | F: 270-586-4788 | simpson.ca.uky.edu

Cooperative Extension Service

Agriculture and Natural Resources
Family and Consumer Sciences
4-H Youth Development
Community and Economic Development

MARTIN-GATTON COLLEGE OF AGRICULTURE, FOOD AND ENVIRONMENT

Educational programs of Kentucky Cooperative Extension serve all people regardless of economic or social status and will not discriminate on the basis of race, color, ethnic origin, national origin, creed, religion, political belief, sex, sexual orientation, gender identity, gender expression, pregnancy, marital status, genetic information, age, veteran status, physical or mental disability or reprisal or retaliation for prior civil rights activity. Reasonable accommodation of disability may be available with prior notice. Program information may be made available in languages other than English. University of Kentucky, Kentucky State University, U.S. Department of Agriculture, and Kentucky Counties, Cooperating.

Lexington, KY 40506



Disabilities
accommodated
with prior notification.

4-H Achievement Applications due Monday, October 13

- If you've never completed a KY 4-H Achievement Application before and have been active in 4-H for at least one year contact me - I will help you get started!
- I can't stress enough how important it is for active 4-H members to complete an achievement application. Once you have it started you simply add to it year after year.
- For those that have completed one before...there is a new version of the application that old versions must be converted to. You should have received multiple emails from Catherine regarding this.
- Remember you are keeping a record of everything you have done in 4-H since 4-H age 9 – do not include any Cloverbud activities!
- Achievement Applications are due to the Extension Office by Monday, October 13 via email to cwebster@uky.edu, brooke.brown@uky.edu, and/or cristy.soyars@uky.edu
- All youth completing an application will be recognized at the 4-H banquet on November 17.
- Cloverbuds can complete an application with your activities to be recognized at the banquet too!

Tips for Completing Achievement Applications

- Do not count activities in more than one location throughout the application!
- Applications must be typed and submitted electronically or on a flash drive - we cannot accept handwritten copies.

Catherine is available from 3:15-4:15 p.m. (afterschool) on September 30 and October 1 & 8 for anyone needing additional assistance in completing your achievement application...this can be for those completing an application for the first time or for those that have gotten started but have questions. This will not be a full training session like August 28 & September 18. For those needing a full training I can send you a link to a video recording.

County 4-H Banquet

On behalf of the Simpson Co. 4-H Council, I invite 4-H members & their immediate family to the Annual 4-H Achievement Banquet on Monday, November 17 at 6:00 p.m. at the Barn at Bethel Grove. We will recognize our 4-H club members for their outstanding accomplishments in 4-H from the past year. We hope you will make plans to attend the banquet to help celebrate our 4-H members and leaders. Please make your reservations by calling the Extension Office at 270-586-4484 by Friday, November 8. Doors will open at 5:45 p.m. – you will go through the buffet line and fix your plate before sitting down. We will start the recognition program at 6:45 p.m. Please see the enclosed list of the awards that will be recognized. With the change in the Achievement Application our awards presented will look differently this year.

Thank you to everyone that worked concessions at 4-H fundraisers this summer!
Big changes are coming to 4-H concession sales next year...stay tuned!

300 N Main St | Franklin, KY 42134 | P: 270-586-4484 | F: 270-586-4788 | simpson.ca.uky.edu



2025 4-H AWARD BANQUET GUIDELINES

Revised 9/16/25

- Out of Your Shell Award: This award is presented to one member that has “come out of their shell” through their participation in 4-H. The award recognizes one member that has grown/flourished/excelled because of 4-H. *The winner is selected based on nomination submitted by club leaders.*
- Community Pride (one club & one individual): An outstanding club and/or individual 4-H community pride project will be selected based on entries submitted, to proceed to area competition. A Community Pride form must be completed, with accompanying photos of community service activity. *Clubs and/or individuals self- nominate.*
- Communications Award (one junior & one senior): Based on participation in 4-H communications contests including Talk Meet, Demonstrations, Sr. Mock Interviews, Written Communications, and all other contests deemed communications by KY 4-H including, but not limited to: Country Ham Speech, Animal Science (livestock, horse, poultry) Reasons, State Poultry Demonstration, Horse Contests Speech/Demonstration, etc. *A scoresheet to use to determine winners*
- Cloverbuds enrolled/active in 2024-25 that are in attendance at the banquet will be recognized
- Youth that submit a 4-H Achievement Application will be recognized with a 4-H marketing item, including Clover Level 1, 2 & 3 recipients and Bronze/Silver/Gold applicants for 2025-2026. As they come to the stage their top five accomplishments in 4-H for the 2024-2025 4-H year will be read. **Members will submit their top five list to the Extension Office by the set deadline or up to their top five will be selected for them.**
- Bronze, Silver, Gold, and/or Emerald recipients from 2025
- Club Leaders & 4-H Council Members will be recognized that are in attendance at the banquet
- Anyone serving on a State Leadership Board, STC, and/or as a State Officer
- Honor Cords to any 2026 Graduating High School Senior that participates in the KY 4-H Achievement Program
- Friend of 4-H Award: Friend of 4-H Award is presented one individual or business that has supported the County 4-H Program throughout the year. Leaders can nominate
- 2026 KY Volunteer Forum honorees
- Banquet program will include a list of 2024-2025 participants in 4-H events with an * denoting county winners. It will also include a list of the 2024 County 4-H Banquet award recipients.



West KY 4-H Teen Retreat

October 23-25 is the West KY 4-H Camp Teen Retreat for 8th-12th grades. It begins on Thursday evening and goes through Saturday morning. The cost is \$100 per teen. Enclosed you will find a flyer with details. Catherine will not be attending teen retreat. For Simpson Co. to send teens we need a chaperone for the weekend. The cost for a county chaperone will be paid. Register due to the Simpson Co. Extension Office by Sept. 30.

Mammoth Cave Area 4-H Teen Council

The Area Teen Council gives 4-H teens in the Mammoth Cave Area the opportunity to come together for fun, hands-on leadership opportunities. It's open to any teen 8th grade & up. The next meeting will be held on Monday, November 10 at 5:00 p.m. in Barren County, location TBA. Contact Catherine by November 6 if you plan to attend and need a ride. Teens are also welcome to drive on their own.



Hometown Holiday Bazaar

Saturday, December 6 is the 14th Annual Hometown Holiday Bazaar hosted by Simpson Co. 4-H at the Franklin First United Methodist Church & Franklin Presbyterian Church with room for 40 vendors. Vendor applications are available as a google form and must be submitted by October 17. All vendor applications will then be reviewed by a committee and those selected will be notified by October 23 with the vendor fee of \$50 due by October 31. We will need 4-H volunteers to help with setup & take down, to assist throughout the day, and/or by donating food. A volunteer sign-up link will be sent out in November.

John Swack 4-H Scholarships

If youth have completed Clover Level 3 through the Achievement Application then you are eligible to start working towards a John Swack 4-H Scholarship. To receive a scholarship you must complete three years of an Achievement Application beyond level 3, organize a community service project, and have 6 hours fundraising for the scholarship program. Working the bazaar counts toward the fundraising hours so hold December 6 if interested.

County 4-H Shirts



We have a limited number of 4-H shirts (2 YM, 1 YL, & 1 AM) & hoodies (YL thru 3X) remaining for purchase at the Extension Office. T-Shirts are \$10.00 and Hoodies are 20.00.

September 15-19 KY Ag Education Week

Last week was Ag Education Week in KY. Enclosed you will find a flyer of facts about agriculture in Kentucky.

300 N Main St | Franklin, KY 42134 | P: 270-586-4484 | F: 270-586-4788 | simpson.ca.uky.edu



2026 Kentucky Volunteer Forum (KVF) is February 26-28

The Kentucky Volunteer Forum is an educational conference geared towards 4-H and Extension volunteers from all program areas. The forum offers 220 workshops in 25 content tracks, professional development sessions, seminars on wheels, networking opportunities, a trade show, and three recognition events. Volunteers can also receive an accreditation in Agriculture, Camping, Cloverbuds, Communications & Expressive Arts, Family & Consumer Sciences, Health, Leadership, Natural Resources, and Science, Engineering, & Technology. Additionally, numerous volunteer awards will be given and 10-year 4-H members recognized for their contributions to the Kentucky 4-H Program.

Simpson County 4-H would love to have several leaders and teens attend! More information can be found on the KVF website at <https://4-h.ca.uky.edu/core-program-areas/kentucky-volunteer-forum>. Registration is due to the Extension Office by December 11 to get the early bird rate! Simpson County is a forum sponsor which comes with some complimentary registrations that will be divided among those going.

4-H "Housekeeping"

- When 4-H members are texting Catherine and/or any other leaders one-on-one please include your parent on the text too. 4-H follows the "rule of three" as opposed to one-on-one texts between youth and adults.
- When 4-H members are leaving club meetings, especially downstairs, a parent or adult should come inside to pick youth up. Members should not walk to the upstairs parking lot and leaders should not leave the rest of the club unattended to walk a member out without knowing the adult is present. I apologize if this is an inconvenience for anyone however it is in the best interest/safety of our members!
- When using the Extension Office meeting rooms for clubs please do the following at the end of the meeting:
 - ✓ Take the trash out to the dumpster
 - ✓ Make sure the bathroom faucets turned off
 - ✓ Sweep the floors & wipe down the tables with a disinfectant wipe
 - ✓ Make sure the downstairs doors are locked when you leave
 - ✓ The TV with the security cameras stays on all the time, and so does the hallway/foyer light
 - ✓ If you notice any supplies are needed please let the Extension Office know

County 4-H Fundraiser Policy

Any youth enrolled in Simpson Co. 4-H can set up a member account. When you work a 4-H fundraiser the proceeds are divided equally among those working and put into your member account for future 4-H activities. For example, if five 4-H members work a bake sale that makes \$500, then \$100 is deposited into each member's account. These funds can be used to pay for 4-H Camp, Cloverbud Camp, Teen Conference, Horse Camp, etc. If it is a fundraiser where you are selling something then you receive the profit from what you sell. For example, if you sold 10 dozen donuts that had a profit of \$4.50 each then you earn \$45 into your account.

300 N Main St | Franklin, KY 42134 | P: 270-586-4484 | F: 270-586-4788 | simpson.ca.uky.edu



Issues Conference November 20-22

Civic-minded 4-Hers from across Kentucky are invited to put their community leadership skills to work at the 36th annual Kentucky 4-H Issues Conference, to be held at Paradise Valley Conference Center in Burkesville November 20–22. The three-day event gives young leaders in grades 9–11 the chance to play an active role in identifying and addressing the most pressing concerns in their counties. Delegates at the conference will join action groups along with adults based on their personal interests and work together to develop plans for tackling local challenges. The groups then present their proposals to a review panel on the final day of the conference. Registration & conference fees should come out next week – contact the Extension Office if you are interested. Transportation is on your own – Catherine will not be attending Issues.



4-H Shirts

The John Swack 4-H Scholarship Committee also has a few "Eat, Sleep, Repeat" 4-H Shirts remaining – these shirts raise funds for our 4-H Scholarship Fund. The shirts are \$15.00 each and housed at the Allen Co. Extension Office but I can pick them up at anytime. Sizes available include 1 YL then AL-3X.

4-H Happenings

Are you on Facebook? If so, *Like* the Simpson County Cooperative Extension Service to stay up to date between newsletters. Are you receiving weekly 4-H emails from cwebster@uky.edu? If not email me to be added to the 4-H email list. Email is the primary way Simpson County 4-H communicates with members on a weekly basis, as newsletters are mailed quarterly.



Simpson County camped 61 this summer at West KY 4-H Camp. It was a record-breaking number and we hope to take even more next year! Watch for a save the date in October with the 2026 camp dates.



Congratulations to Olivia & Juliana Jackson, Allie & Shelby Ford, and Adairlyn & Halle Hester for competing in the State Cupcake Wars last week. It was so much fun – watch for a

County Cupcake Wars coming in February!



300 N Main St | Franklin, KY 42134 | P: 270-586-4484 | F: 270-586-4788 | simpson.ca.uky.edu



Summer 4-H Contests and KY State Fair Champions

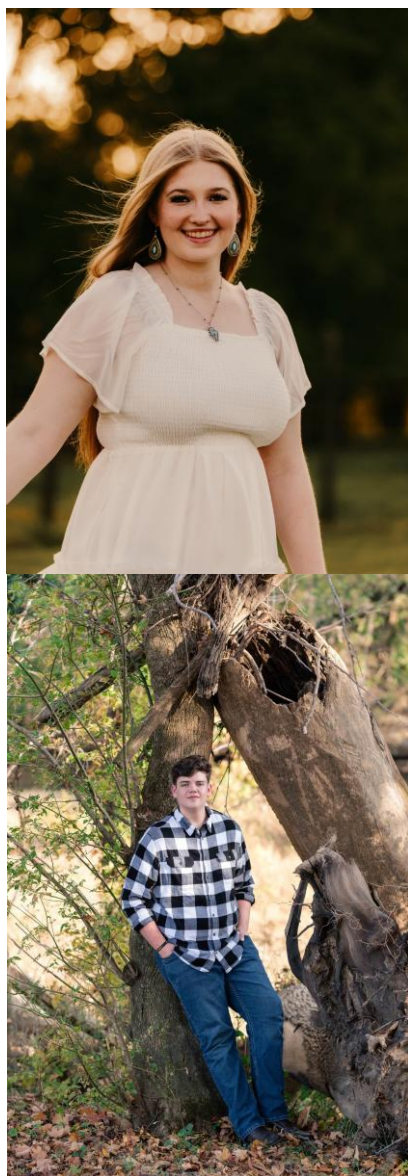
- 4-H members Mady Meador & Cameron Huggins competed in the State 4-H Communications Contest in Winchester in July. They both earned blue ribbons for their speeches and Mady placed 3rd in the 15 year old age division. Congratulations!
- State Fair Poultry Showmanship: Congrats to SC for receiving a blue ribbon in poultry showmanship.
- State Fair Country Ham Contest: Mady Meador placed 2nd in her smoked ham speech age division. Kate Ford placed 3rd in her smoked ham speech age division also. Both SC Gober & Iris Miles placed 3rd with their hams in their respective smoked ham age divisions.
- State Fair Cloverville: Teaver Gober in photography, Dyllin Rudy in horticulture, and Ava-Kate Hall twice in foods, all won classes in Cloverville. Cloverville had over 9,500 entries this year!
- Kate Ford was the Emerald Award Recipient speaker at the annual KY 4-H Foundation Donor Breakfast at the State Fair. She did a wonderful job representing Kentucky 4-H and addressing the impact the donors have on Kentucky's 200,000 members.
- Cecilia Huggins competed in the State Egg Chef Challenge in Elizabethtown in July and won with her Derby Pie Demonstration! Cameron and Cecilia also competed in the State Turkey BBQ Contest on the same day where Cameron was Senior Reserve Champion and Cecilia placed 4th.
- State Fair Poultry Contests: Liam, SC, & Teaver made up the Junior Avian Bowl team and Cecilia & Shelby made up the Senior Avian Bowl team. Simpson County placed 2nd in the poultry t-shirt design contest. SC received a blue ribbon in Jr. poultry judging and Cecilia was the Sr. Reserve Grand Champion. The Jr. Avian Bowl team won & the Sr. team placed 2nd. Liam was the Jr. Individual Grand Champion and Cecilia was the Sr. Reserve Grand Champion. Shelby was 5th Place Individual Senior. Good luck to Cecilia and Shelby as they advance to the National Poultry Conference in November!
- 4-H Garden Club members Journey, Branson, Parker, & Liam competed in the Jr. Horticulture Contest while Michaela & Dyllin competed in the Sr. Horticulture Contest. This contest tests team members knowledge in Vegetable Judging & ID, Fruit & Nut ID, Tree & Shrub ID, and Flower & Houseplant ID. Congratulations to the Junior Team for being the Grand Champion! Liam was also the Individual Grand Champion & Parker the Individual Reserve Grand Champion!
- The 4-H Forestry Field Day was at Mammoth Cave in September where 100 youth went through hands-on classes in Compass & Pacing, Tree ID, and Tree Measurement with Mammoth Cave Park Rangers & UK Extension Specialists, then they competed in each of these areas to test their knowledge & skills. Congratulations to Shelby, Allie, Liam, Sam, Benjamin, Sophia, and Emilia from Simpson County. Shelby Ford - 1st Place Senior Tree Measurement and Allie Ford - 2nd Place Senior Compass & Pacing. Sam Sublett - 3rd Place Junior Tree Measurement. Liam Wentz - 1st Place Jr. Tree ID, 2nd place Jr. Tree Measurement, and Overall Jr. Grand Champion
- Mady Meador, Baylee Chandler, Allie & Shelby Ford, Ryder & Levi Janson, Cecilia Huggins, and Lucas Sublet competed in the State 4-H Shooting Sports competition last weekend in the Lexington area against some 1,000 other 4-H competitors from across Kentucky. Congratulations!

300 N Main St | Franklin, KY 42134 | P: 270-586-4484 | F: 270-586-4788 | simpson.ca.uky.edu

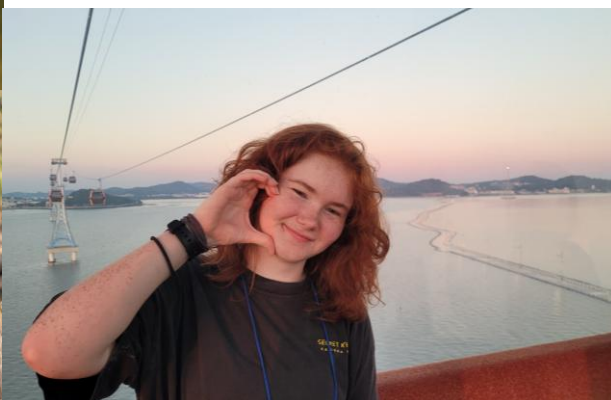


Simpson County 4-H had four seniors graduate this year. Good luck as you start your next adventures...

Cameron Huggins is a Freshman at Florida College in Temple Terrace, Florida. She is pursuing an Ag Business degree. Cameron says, "4-H helped me get where I am today. One of my favorite 4-H memories is going to the State Fair. I loved the competitions, the 4-H environment, and of course the food!"



Kate Ford is attending SKYCTC this Fall in Business Administration and Culinary Arts with a Farm to Table focus. She'll also be getting her AI & Embryo Transfer certification for cattle in Mississippi this Fall. Her favorite 4-H memories come from her year as a State 4-H Officer, as well as her 4-H trips with Catherine & Anabeth.



Sage Booher had the amazing opportunity to visit South Korea this summer through the States' 4-H International Exchange Program where she stayed with a Korean host family. "I had the best time, and honestly could not tell you my favorite thing about it; there were so many! The 4-H Exchange Outbound program is truly a once in a lifetime experience."

Seth is attending SKYCTC where he is studying their culinary program. He plans to find a restaurant job and work his way up in the industry. "My fondest 4-H memories would include the Helping Hands Club, specifically the Elf Connection program I helped with every year, providing kids with a brighter Christmas."



300 N Main St | Franklin, KY 42134 | P: 270-586-4484 | F: 270-586-4788 | simpson.ca.uky.edu

Cooperative Extension Service

Agriculture and Natural Resources
Family and Consumer Sciences
4-H Youth Development
Community and Economic Development

MARTIN-GATTON COLLEGE OF AGRICULTURE, FOOD AND ENVIRONMENT

Educational programs of Kentucky Cooperative Extension serve all people regardless of economic or social status and will not discriminate on the basis of race, color, ethnic origin, national origin, creed, religion, political belief, sex, sexual orientation, gender identity, gender expression, pregnancy, marital status, genetic information, age, veteran status, physical or mental disability or reprisal or retaliation for prior civil rights activity. Reasonable accommodation of disability may be available with prior notice. Program information may be made available in languages other than English. University of Kentucky, Kentucky State University, U.S. Department of Agriculture, and Kentucky Counties, Cooperating.

Lexington, KY 40506



Disabilities
accommodated
with prior notification.

Friday, October 3, 2025
10:30 a.m. – 1:00 p.m.

4-H RIBEYE SALE

**Ribeye Sandwich,
Chips and Drink \$12.00**

Location: Farmers' Market Pavillion

Walk-ups or Delivery Available!

**For preordering or questions
call (270) 586-4484.**

**Please pre-order by
Monday, September 29**



**Cooperative
Extension Service**

Agriculture and Natural Resources
Family and Consumer Sciences
4-H Youth Development
Community and Economic Development

MARTIN-GATTON COLLEGE OF AGRICULTURE, FOOD AND ENVIRONMENT

Educational programs of Kentucky Cooperative Extension serve all people regardless of economic or social status and will not discriminate on the basis of race, color, ethnic origin, national origin, creed, religion, political belief, sex, sexual orientation, gender identity, gender expression, pregnancy, marital status, genetic information, age, veteran status, physical or mental disability or reprisal or retaliation for prior civil rights activity. Reasonable accommodation of disability may be available with prior notice. Program information may be made available in languages other than English. University of Kentucky, Kentucky State University, U.S. Department of Agriculture, and Kentucky Counties, Cooperating.

Lexington, KY 40506



Disabilities
accommodated
with prior notification.

MAMMOTH CAVE AREA



Martin-Gatton
College of Agriculture,
Food and Environment
University of Kentucky

4-H TEEN COUNCIL



**All Area Teen Meetings
take place Bi-monthly on
2nd Mondays at 5:00 PM**

- Sept. 8th (Warren Co.)
- Nov. 10th (Barren Co.)
- Jan. 12th (Warren Co.)
- Mar. 9th (Barren Co.)
- May 11th (Warren Co.)

**OPEN TO ALL 4-H
TEENS (8TH - 12TH
GARDES)**

**FROM ALLEN, BARREN,
BUTLER, EDMONSON,
HART, LOGAN,
METCALFE, MONROE,
SIMPSON, WARREN
COUNTIES**

**CONTACT YOUR COUNTY AGENT TO REGISTER
EACH MONTH & FOR TRAVEL DETAILS**



PLEASE RSVP 1 WEEK PRIOR EACH MONTH

Cooperative Extension Service

Agriculture and Natural Resources
Family and Consumer Sciences
4-H Youth Development
Community and Economic Development

MARTIN-GATTON COLLEGE OF AGRICULTURE, FOOD AND ENVIRONMENT

Educational programs of Kentucky Cooperative Extension serve all people regardless of economic or social status and will not discriminate on the basis of race, color, ethnic origin, national origin, creed, religion, political belief, sex, sexual orientation, gender identity, gender expression, pregnancy, marital status, genetic information, age, veteran status, physical or mental disability or reprisal or retaliation for prior civil rights activity. Reasonable accommodation of disability may be available with prior notice. Program information may be made available in languages other than English. University of Kentucky, Kentucky State University, U.S. Department of Agriculture, and Kentucky Counties, Cooperating.

Lexington, KY 40506



Disabilities
accommodated
with prior notification.

GET YOUR GLOW ON

Teen Retreat 2025

OPEN TO YOUTH IN 8TH - 12TH GRADE

@West KY 4-H Camp

October 23 - 25, 2025

Cost: \$100

Contact your Agent for more info



TEEN RETREAT

October 23-25, 2025



WHAT TO PACK...

- ⇒ Sleeping bag & pillow or ...
- ⇒ Sheets & blanket (twin)
- ⇒ Towels, toiletry items
- ⇒ Snacks (optional)
- ⇒ WARM clothes for outside
- ⇒ Casual clothing/shoes
- ⇒ Glow clothes & accessories for the dance

Open to youth in
8th—12th grade!



Cooperative Extension Service
Agriculture and Natural Resources
Family and Consumer Sciences
4-H Youth Development
Community and Economic Development

Educational programs of Kentucky Cooperative Extension serve all people regardless of economic or social status and will not discriminate on the basis of race, color, ethnic origin, national origin, creed, religion, political belief, sex, sexual orientation, gender identity, gender expression, pregnancy, marital status, genetic information, age, veteran status, or physical or mental disability. University of Kentucky, Kentucky State University, U.S. Department of Agriculture, and Kentucky Counties, Cooperating.

LEXINGTON, KY 40546

Thursday, October 23

- 5:00 p.m. Registration
- 6:00 p.m. Dinner
- 6:45 p.m. Opening and Orientation
- 7:00 p.m. State Teen Board information
- 7:15 pm Civic Engagement speaker

Saturday, October 25

- 8:30-9:15 a.m. Breakfast
- 9:15 a.m. Clean up
- 10:00-10:45 a.m. Assembly, Slideshow, Evaluation, Photos
- 10:45 Check Out/Go Home

- 7:30 p.m. Mixers/Ice Breakers
- 8:00 p.m. Class sign ups
- 8:30 p.m. Games & Dances
- 9:45 p.m. Reflections
- 10:15 p.m. In Cabins
- 11:00 p.m. Lights Out

Friday, October 24

- 8:00-8:45 a.m. Breakfast
- 9:00-9:55 a.m. Class 1
- 10:00-10:55 a.m. Class 2
- 10:55-11:15 a.m. Break/Snack
- 11:20 a.m. -12:15 p.m. Class 3
- 12:15 –1:15 p.m. Lunch
- 1:15-2:15 p.m. Fun Shop A
- 2:30-3:30 p.m. Fun Shop B
- 3:30-5:00 p.m. Free Time (Country Store Open)
- 5:00-6:30 p.m. Group Activity
- 6:30-7:15 p.m. Dinner
- 7:30– 9:15 p.m. Dance
- 9:15 p.m. Reflections & Camp Fire
- 10:00 p.m. In Cabins
- 11:00 p.m. Lights Out

Possible Classes

Hammocking

Cooking

Crafts

Science and more!

Fishing

Leadership with the State Officers

Possible Funshops

Recreation

Crafts

Gaga ball

Be ready for a **GLOWING** team challenge!

Grow and Glow
with KY 4-H

HK Martin-Gatton
College of Agriculture,
Food and Environment



Disabilities
accommodated
with prior notification..

4-H Youth Development

Kentucky is home to 69,425 farms.

About half of Kentucky's 25.8 million acres is considered farmland.



Kentucky Food and Farm Facts

Agriculture Grows Our Communities



Chickens, Horses, and Beef Cattle lead Kentucky's livestock sales, bringing more than \$1 billion each in 2023.



Kentucky is number one in the nation for horse sales.

Kentucky's horses and horse-related assets are valued at more than \$23 Billion.

Poultry production employs more than 7,000 people and uses more than 25% of the state's corn and soybeans.



Kentucky is the largest beef cattle state east of the Mississippi River.

The Bluegrass is currently home to 1.85 million cattle.



Soybeans and corn are Kentucky's largest cash crops.

They are sold for food, livestock feed, renewable fuels, and many other uses.



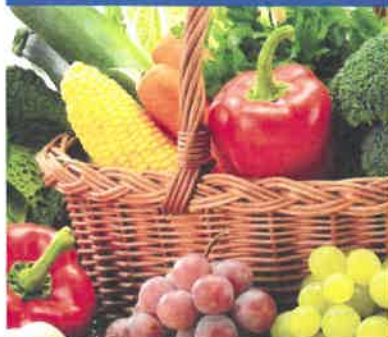
Kentucky farmers harvest about 2 million acres of hay each year to feed livestock.

Kentucky is the leading producer of Burley tobacco.

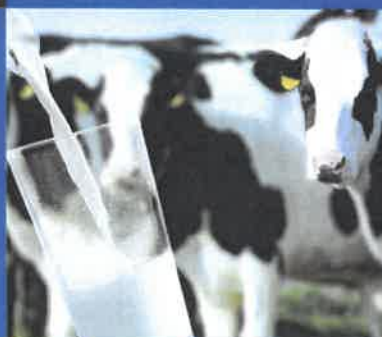
The commonwealth is second in the nation for total tobacco production.



Kentucky farmers raise many crops and livestock to feed people locally and around the world.



The number of Kentucky farms raising commercial produce has increased over the last several years.



Kentucky Agriculture Cash Receipts

The following report was provided by the USDA Economic Research Service, December 3, 2024.

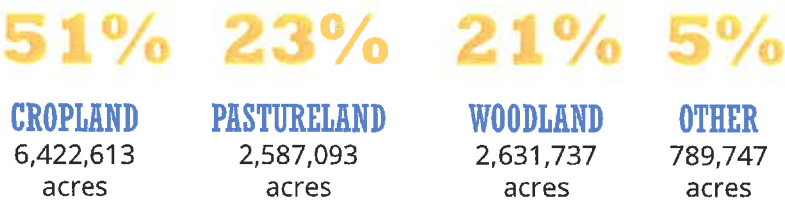
Snapshot

Animals and products.....	\$4.359 billion
Crops.....	\$3.714 billion
Farm-related income	\$1.689 billion
Total Farm Income	\$9.922 billion

Top Commodities by Sales Receipts in 2023

1. Soybeans.....	\$1.402 billion
2. Broilers.....	\$1.287 billion
3. Cattle and Calves	\$1.259 billion
4. Corn.....	\$1.242 billion
5. Horses.....	\$1.173 billion
6. Hay.....	\$360 million
7. Wheat	\$249 million
8. Chicken Eggs	\$246 million
9. Tobacco	\$225 million
10. Milk & Dairy Products.....	\$196 million
11. Hogs.....	\$154.5 million
12. Miscellaneous Crops	\$149 million
13. Turkeys.....	\$39 million
14. Floriculture.....	\$28 million
15. Farm chickens.....	\$2.4 million
16. Honey	\$1.9 million
17. Rapeseed.....	\$660 thousand
18. Wool	\$59 thousand
19. Mohair	\$6 thousand

How is Kentucky's farmland used?



Where does Kentucky rank in the nation?

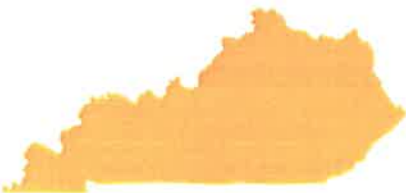
1st
Horse & Equine Sales

2nd
Tobacco Sales

3rd
Grass Hay Production

4th
Number of Cattle Farms

6th
Number of Total Farms
Source: USDA-NASS 2022 Ag Census



Top Commodity Exports

Horses
\$789.3 million

Soybeans
\$766.7 million

Corn
\$303.3 million

Tobacco
\$257.6 million

Feed
\$149.8 million

Source: USDA-ERS (2022 report)



Cooperative
Extension Service

14th Annual Hometown Holiday Bazaar

Saturday, December 6, 2025

10:00 a.m. - 4:00 p.m.

First United Methodist Church &
Franklin Presbyterian Church on North
College St. in Downtown Franklin, KY

Vendors can apply using this QR Code to
submit the Google Form.



Sponsored by Simpson County 4-H

Questions Call 270-586-4484
or Email cwebster@uky.edu

The Bazaar is held in conjunction with a Small Town Christmas
& The Franklin Christmas Parade

**Cooperative
Extension Service**

Agriculture and Natural Resources
Family and Consumer Sciences
4-H Youth Development
Community and Economic Development

MARTIN-GATTON COLLEGE OF AGRICULTURE, FOOD AND ENVIRONMENT

Educational programs of Kentucky Cooperative Extension serve all people regardless of economic or social status and will not discriminate on the basis of race, color, ethnic origin, national origin, creed, religion, political belief, sex, sexual orientation, gender identity, gender expression, pregnancy, marital status, genetic information, age, veteran status, physical or mental disability or reprisal or retaliation for prior civil rights activity. Reasonable accommodation of disability may be available with prior notice. Program information may be made available in languages other than English. University of Kentucky, Kentucky State University, U.S. Department of Agriculture, and Kentucky Counties, Cooperating. Lexington, KY 40506



Disabilities
accommodated
with prior notification.

14th Annual Hometown Holiday Bazaar

Sponsored by Simpson County 4-H

Locations: Franklin First United Methodist Church Christian Life Center AND Franklin Presbyterian Church Cornerstone Building

Saturday, December 6, 2025 10:00 a.m. to 4:00 p.m.



Read guidelines in full before submitting vendor application:

1. To apply for a booth, you must submit an application by completing the google form. Do NOT pay until application has been approved.
2. Vendor applications will be reviewed by the 4-H Bazaar Committee. Vendors will be notified via email on October 22nd if their application has been approved or denied. Once application is approved, payment must be submitted between October 22nd and 31st, or your booth will be lost.
3. Priority will be given to craft vendors. Spaces for trademark items and/or non-craft vendors are limited. Vendors must have an adequate supply of "cash & carry" items at the bazaar. Booths taking "orders only" and baked goods are not allowed. The Bazaar Committee is limiting the number of vendors selling same or similar items.
4. Booth space is approximately 10x10 and will be marked off for vendors. Booths are \$50. Vendors must provide their own table for their vendor space.
5. The bazaar will have two locations again this year. The bazaar will be held at BOTH the Methodist Church AND the Presbyterian Church. Vendors may NOT request a specific location or vendor spot – the 4-H Bazaar Committee will assign all vendor locations/spots. The Methodist Church is located at 107 North College Street and the Franklin Presbyterian Church is located at 201 North College Street. Shoppers will easily be able to walk from one location to another and signs will be posted.
6. Setup will be 7:00-9:30 a.m. the day of the event (there is no set up the evening before). All vendors must be setup and ready to go by 9:45 a.m. Vendors must remain open until 4:00 p.m. Vendor take down is 4:00-5:30 p.m. A Small Town Christmas and the Franklin Christmas parade will take place on Saturday afternoon/evening December 6 but the times have not been announced yet.
7. Donuts & coffee will be provided to vendors during setup. Simpson Co. 4-H will have concessions for sale at the Methodist Church for lunch.
8. Simpson Co. 4-H is not responsible for accidents or lost/stolen items.
9. No refunds will be given to a vendor who cancels after their application has been approved.
10. Each exhibitor is responsible for filing or paying taxes as required by law.

If you have additional questions contact the Simpson Co. Extension Office at 270-586-4484.



Simpson County 4-H Clubs

2025-2026



Welcome, I am excited to have you join 4-H in Simpson Co. 4-H is for youth ages 5-18 that live and/or attend school in Simpson Co. Ages 5-8 are Cloverbud members; when you turn age 9 you become an official 4-H member the following January 1.

In Kentucky, 4-H is a part of the University of KY and KY State University. 4-H brings these universities youth programs in Animal Science, Family & Consumer Sciences, Natural Resources, Communications, Leadership, Health, and Science/Engineering/Technology to Simpson Co. The "4-H Office" is the Simpson Co. Extension Service located at 300 North Main Street, next door to the Farmers Market pavilion. Office hours are Monday - Friday 8:00 a.m. to 4:30 p.m. You can also call 270-586-4484, email cwebster@uky.edu, or find us on Facebook under "Simpson County Cooperative Extension Service". There is no cost to join!

The Simpson Co. 4-H Youth Development program has three parts – 4-H Clubs, School Enrichment Programs, and 4-H Camp. Most 4-H clubs meet once a month after school or at night. Some meet at the Extension Office, while others meet offsite at schools or other community buildings. The County Extension Agent for 4-H Youth Development oversees the 4-H program, while the clubs are led by parents and volunteers. The clubs are where the fun takes place and what you are becoming a part of! 4-H also takes young people ages 9-15 to 4-H Camp every summer.

Youth must complete an annual Participation/Enrollment (PIE) Form and return to the Simpson Co. Extension Office, or scan the QR Code to create an account and sign up online. Then watch your email for 4-H updates, your mail for a quarterly 4-H newsletter, and "Like" our Facebook page to stay up-to-date with Simpson Co. 4-H happenings! Some clubs also have Facebook groups or use the BAND app to communicate directly with members.

Catherine. P Webster, Simpson Co. Extension Agent for 4-H Youth Development

Catherine P. Webster



Cooperative Extension Service

Agriculture and Natural Resources
Family and Consumer Sciences
4-H Youth Development
Community and Economic Development

MARTIN-GATTON COLLEGE OF AGRICULTURE, FOOD AND ENVIRONMENT

Educational programs of Kentucky Cooperative Extension serve all people regardless of economic or social status and will not discriminate on the basis of race, color, ethnic origin, national origin, creed, religion, political belief, sex, sexual orientation, gender identity, gender expression, pregnancy, marital status, genetic information, age, veteran status, physical or mental disability or reprisal or retaliation for prior civil rights activity. Reasonable accommodation of disability may be available with prior notice. Program information may be made available in languages other than English. University of Kentucky, Kentucky State University, U.S. Department of Agriculture, and Kentucky Counties, Cooperating. Lexington, KY 40506



Disabilities
accommodated
with prior notification.



The Simpson County 4-H Program is open to youth 5-18 years old. Below is a list of our clubs.

4-H For Grades K-3:

Cloverbuds-This club is for ages 5-8 (K-3rd grades). The Cloverbud Club is a fun learning experience for younger kids that want to join 4-H and learn a little about everything 4-H has to offer. Each month they focus on a different area within 4-H. Some of their fun activities include sewing, art projects, cooking, and much more! The club meets monthly (September-May) the 4th Monday at 6:00 p.m. in Simpson Elementary School Cafeteria and a parent must attend with the youth.

Cloverbud Leaders: Kaylee Wheeler and Brooke Brown

Project Clubs: Must be 9 years old as of 1/1/2026 to join these Clubs.

Art (9-18 years old)-This club focuses on the variety of art related projects 4-H has to offer including activities in Painting, Printing, Drawing, and Sculpture. Completed member projects can be entered in the County Exhibit Hall & State Fair next summer. The club meets the 4th Monday monthly (September-April) at the Gallery on the Square, at 4:00 pm.

Club Leader: Sharon Taylor-Carrillo

Acres of Adventure Homeschool Club (9-18 years old)-This club is for Homeschooled youth in Simpson County. Each meeting will focus on different topics from 4-H agriculture and science curriculum. The club meets the 2nd Monday monthly (October-May) at 10:00 a.m. in the Extension Office Downstairs Meeting Room.

Club Leader: Candy Wentz

Gardening (9-18 years old)-Did you know that gardening at an early age will help lead to a healthy lifestyle? Members of this club will learn about plant & soil science, participate in growing a tower garden, horticulture judging by learning to identify fruits, vegetables, & trees, help to identify plant insects & diseases, and get to plant & grow your own plants and vegetables. The club meets October 16th then the 2nd Thursday monthly (November-May) in the Extension Office Downstairs Meeting Room at 5:00 p.m. State Fair Horticulture teams will also meet throughout the summer.

Club Leader: Candy Wentz

Homesteading (9-18 years old)- Do you like new skills or practice newly acquired skills? If so, this is a club for you. Each meeting will feature a different skill that has been forgotten or not used. Members will be introduced to cheese making, butter making, cooking from scratch, starting/planning a garden or bucket gardens, soap making, bee keeping, composting, preserving food through a variety of methods like canning, dehydrating, and freeze drying. Meets 3rd Monday 6:30 - 8:00 p.m. at the Extension Office September through April.

Club Leader: Pam Meador & Holly Simmons


Lucky Spurs Horse Club (9-18 years old)- This club is for Horse Lovers, "Whether you own a horse or just dream of horses, there is a place for you when you join us for some horsing around." Club members participate in county, district, state, & national events including horse camp, state horse contests, hippology & horse bowl, and horse shows. Horses not provided for riding events. To ride, members are required to own or lease their own horse. First meeting will be held Thursday, October 2nd at 5:30 pm in the Downstairs Meeting Room of the Extension Office.

Club Leaders: Rebecca Cushenberry & Kate Ford

Photo Cats Photography (9-18 years old)-This club teaches youth basic photo taking techniques and covers a wide range of topics. Each monthly meeting focuses on a different aspect of photography. Members can also exhibit in both the county exhibit hall & state fair. The club meets on the 3rd Thursday monthly (September-May) in the Extension Office Downstairs Meeting Room at 5:00 p.m.

Club Leaders: Wendy Meador & Katie Perry





Poultry (9-18 years old)- Poultry Club meets the 4th Tuesday monthly at 6:00 - 7:30 p.m. at the Extension Office (January-May) with the Avian Bowl teams meeting in the summer too. More and more families have backyard poultry projects; this club will give members the opportunity to participate in 4-H poultry judging, avian bowl, poultry shows, the chicken & turkey BBQ, and chick incubation. First meeting will be January 27, 2026.

Club Leader: Amber Huggins

Pinheads Sewing Club (9-18 years old)-Want to learn to sew, or maybe you already know how to sew but want to improve your sewing skills? Are you looking for a fun place where young people can meet to have fun sewing together? Then the 4-H Sewing Club is the place for you! The club meets the 1st, 3rd, & 5th Mondays monthly (September-May, beginning September 15) 4:00-6:00 p.m. at the Extension Office. There will be no meeting October 7th or April 6th.

Club Leader: Adrian Booher with Sharon Taylor-Carrillo assisting

ShamROCKS Vocal Group (8-18 years old)- This year the ShamROCKS, are shifting gears a bit and singing acapella, no instruments, our voices will be our instruments. We will be exploring basic vocal techniques like Harmony and singing acapella as a group. We will be performing in the community at various events throughout the year, with an end of the year performance on April 23, 2026. Meets September 22nd, then 2nd Mondays monthly, in the Franklin Elementary Gym at 5:00 pm.

Club Leader: Naomi Rudy with Sharon Taylor-Carrillo assisting

Wildcat Chefs (9-18 years old)- This club allows youth the opportunity to cook & try new foods. Members have fun whipping up their own sweet treats, healthy snacks, and meal ideas. Juniors(grades 4 &5) meet the 1st Tuesday monthly (October-May, due to fall break, first meeting will be held September 30) and will start with basic cooking skills & recipes then advance on. Seniors(grades 6-12) meet the 3rd Tuesday monthly(October- May) to tackle more advanced cooking skills & recipes. All meetings are held at the **FSMS** Culinary Classroom (please note location change this year) 6:00-8:00 p.m.


Club Leaders: Katelyn Jernigan with Cathy Hughes, Kate Ford & Susan Sexton assisting

S.T.E.M Club (11-18 years old)- Science, Technology, Engineering, Math. 4-H is excited to have a science based club for ages 11-18. Club meets monthly September to May (May meeting will be different due to a holiday) on the 4th Monday at 4:00 p.m. at the Simpson County Schools EDGE Academy. Club meetings will focus on teaching a scientific concept then applying that concept by doing/building/making/creating.

Club Leader: Tom Otto

Legends 4-H Shooting Sports: The Simpson Co. 4-H Legends Shooting Club will meet April to September 2026, ending with the state 4-H shooting sports contest held annually in Wilmore, KY the second weekend of September. The club is led by volunteer certified coaches. To become a certified coach you must attend a weekend certification at Lake Cumberland 4-H Camp in Jabez, KY. Simpson Co. 4-H does assist with the cost of the training if needed however transportation is on your own. For 2026 we need a new organizational club leader. Adults interested and/or have questions please reach out to the Extension Office or email cwebster@uky.edu. The State 4-H Office conducts the certifications twice a year and the next one is October 3-5. Contact the Extension Office if interested.

Coaches: Laura Ford, Jeff Sams, Derek Huggins, Jerome Doyle, Scott Janson, Christina Guthrie, Trevor Brooks, Steven Turney, and Lucas Sublett





Area 4-H Teen Council

The Area 4-H Teen Council is for 4-H teens 8th-12th grades in the ten county Mammoth Cave area. It meets the 2nd Monday in September, November, January, March, & May at 5:00 p.m. Meetings rotate between Barren & Warren counties and the 4-H agent typically provides transportation. The council is an opportunity to bring teens together for a variety of fun, hands-on leadership activities. Contact the Simpson Co. Extension Office to join the Area Teen Council.



Community Clubs:

Clover Cats(9-18 years old)-This community club is all about having fun while learning new things! They are a club that focuses on a different area of 4-H each month. Club meetings range from science experiments to leadership games to holiday crafts. The club meets the 2nd Saturday monthly (September-June) at 2:00 p.m. in the Extension Office Downstairs Meeting Room.

Club Leaders: Brandy Eversole with Cathy Hughes and Melissa Naylor assisting

Exchange Club (8th-12th grade)- The 4-H Interstate Exchange Club gives youth the chance to build lifelong friendships, explore new places, and experience different cultures—all while representing their own communities. Through exchange trips with 4-H clubs in other states, members learn leadership, teamwork, and communication skills, while discovering what makes each region unique. It's an adventure in learning, service, and fun—where 4-H'ers come together to “make the best better” across state lines! Meets 2nd Saturday at 10:00 am (October-June). A parent MUST attend the first meeting on October 11th in the Extension Office Downstairs Meeting Room. With the costs associated with this club fundraising is required and a fee will be charged.

Club Leaders: Brooke Brown, Wendy Meador, & Melissa Naylor



4-H Country Ham Project

Youth cure two hams at Clifty Farms in Scottsville on a Saturday in March, June, & July and/or other trainings offered by the county that total six hours of education. After the hams are cured, youth give a 3-5 minute speech on an assigned topic related to country hams at the KY State Fair on August 20, 2026, while professional ham producers judge your ham. Cloverbuds and Adults may participate and cure one ham but do not attend the state fair. Registration & speech topics will be released mid November and due back to the Simpson Co. Extension Office early December. The cost to participate for Simpson County youth only will be \$25.00 and youth get both hams cured. Or FREE and youth get one ham while 4-H uses the other. Adults & Cloverbuds will be \$25.00 & cure one ham. Transportation is on your own to Clifty Farms and the KY State Fair.

4-H Camp

Simpson County 4-H takes youth ages 9-15 to 4-H Camp every summer (the 2026 camping dates have not been set). A typical day at camp begins with cabin cleanup, then breakfast. After breakfast campers rotate through four classes that they select. Classes offered include boating, swimming, archery & riflery, recreation, high ropes, nature, crafts, cooking, fishing, and sports, just to name a few. After lunch campers go swimming, have recreation time, cabin time, and can visit the country store to purchase snacks & souvenirs. After supper camp staff lead a different program each night. These can include a night swim with water games, a mega relay with field games, a scavenger hunt, and/or an outdoor movie night. Each night after the evening program campers come together in the pavilion for a snack and to “Sally Down the Alley.” This is a favorite of campers as they have fun doing upbeat group dances with the camp staff. There's also a weekend Cloverbud Family Camp held every summer for 5-8 year olds with a parent. Registration information will come out on March 1, 2026.

